



ADAPTER

連接板

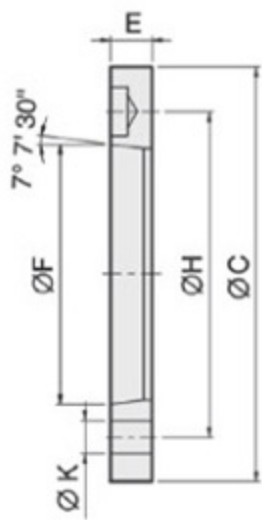
Mounting adapter on short taper spindle noses DIN55026

· 連接板適用短錐度主軸鼻端符合DIN55026。

TYPE1

單位：mm

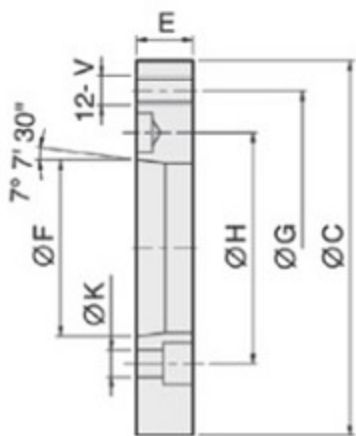
型式尺寸	主軸鼻端	C	F	H	K	E	適合夾頭
N0205-OJ4	A4	110	63.513	82.55	3-11	15	N-205
N0205-OJ42	A4	110	63.513	82.55	4-11	15	NT-205
N0206-OJ5	A5	140	82.563	104.78	6-11	15	N-206, NB-306, V-206
N0206-OJ52	A5	140	82.563	104.78	6-11	15	NT-206, VT-206
N0206-OJ54	A5	140	82.563	104.78	4-11	15	NIT-206
N0208-OJ6	A6	170	106.375	133.35	6-13	17	N-208, NB-208, V-208
N0208-OJ62	A6	170	106.375	133.35	6-13	17	NT-208, VT-208
N0208-OJ64	A6	170	106.375	133.35	4-13	17	NIT-208
NHT0208-OJ6	A6	170	106.375	133.35	6-13	17	NHT-208
N0210-OJ8	A8	220	139.719	171.45	6-17	18	N-210, N-212, NB-210, V-210, V-212
N0210-OJ82	A8	220	139.719	171.45	6-17	18	NT-210, NT-212, VT-210, VT-212
N0210-OJ84	A8	220	139.719	171.45	4-17	18	NIT-210, NIT-212, VIT-212
N0215-OJ11	A11	300	196.869	235	6-21	22	N-215, N-218, NB-212, V-215, V-218
N0215-OJ112	A11	300	196.869	235	6-21	22	NT-215, VT-215
N0215-OJ114	A11	300	196.869	235	4-21	22	NIT-215, VIT-218
V0224-OJ15	A15	380	285.775	330.2	6-25	27	N-220, V-221, V-224, V-232, NB-215, NB-218
V0224-OJ154	A15	380	285.775	330.2	8-25	27	VIT-224, VIT-232
N0224-OJ20	A20	520	412.775	463.6	6-25	25	N-224, N-232, V-240, V-250



TYPE2

單位：mm

型式尺寸	主軸鼻端	C	F	H	K	G	V	E	適合夾頭
N0206-OJ4	A4	140	63.513	82.55	11	104.78	M10	20	N-206, NT-206, NIT-206, NB-306, V-206, VT-206
N0208-OJ5	A5	170	82.563	104.78	11	133.35	M12	23	N-208, NT-208, NIT-208, NHT-208, NB-208, V-208, VT-208
N0210-OJ6	A6	220	106.375	133.35	13	171.45	M16	25	N-210, NT-210, NIT-210, N-212, NT-212, NIT-212, V-210, VT-210, V-212, VT-212, VIT-212
N0215-OJ8	A8	300	139.719	171.45	17	235	M20	33	N-215, NT-215, NIT-215, N-218, NB-212, V-215, VT-215, V-218, VIT-218
N0220-OJ11	A11	380	196.869	235	21	330.2	M24	41	N-220, VIT-232, NB-215, NB-218
N0224-OJ11	A11	520	196.869	235	21	463.6	M24	45	N-224, N-232, V-240, V-250
N0224-OJ15	A15	520	285.775	330.2	25	463.6	M24	42	N-224, N-232, V-240, V-250
V0224-OJ8	A8	380	139.719	171.45	17	330.2	M24	33	V-221, V-224, V-232
V0224-OJ11	A11	380	196.869	235	21	330.2	M24	27	V-221, V-224, V-232
V0263-OJ20	A20	720	412.775	463.6	27	647.6	M30	50	VIT-263, VE-263, VE-279



TYPE3

單位：mm

型式尺寸	主軸鼻端	C	F	H	K	G	V	W	E	適合夾頭
N0205-OJ5	A5	110	82.563	104.78	11	82.55	M10	128	32	N-205, NT-205
N0206-OJ6	A6	140	106.375	133.35	13	104.78	M10	168	35	N-206, NT-206, NB-306, V-206, VT-206
N0208-OJ8	A8	170	139.719	171.45	17	133.35	M12	208	40	N-208, NT-208, NIT-208, NB-208, V-208, VT-208
N0212-OJ11	A11	220	196.869	235	21	171.45	M16	278	50	N-210, NT-210, NIT-210, N-212, NT-212, NIT-212, NB-210, V-210, VT-210, V-212, VT-212, VIT-212
N0215-OJ15	A15	300	285.775	330.2	25	235	M20	378	57	N-215, NT-215, NIT-215, N-218, NB-212, V-215, VT-215, V-218, VIT-218
V0224-OJ20	A20	380	412.775	463.6	26	330.2	M24	520	58	N-220, V-221, V-224, V-232

